

Storm & Wildfire Response

James Banks

Supervisor, Power Dispatch

Puget Sound Energy



Agenda

PSE Profile

Safety is #1

Storm response

Wildfire response

Questions

Puget Sound Energy

- Largest energy provider in WA
- Pacific NW's largest producer of renewable electricity
- 1.1 million electric and 0.8 million gas customers
- 6,000 sq. mile service territory in 10 counties



 Electric & Gas  Electric only  Natural Gas only

Safety First!

1. Never touch a downed line, even if it is insulated.
2. If you see a downed line, call your electric utility.
3. Stock up on needed supplies beforehand to keep the roads clear for emergency responders.

2022 Electric Outage Recap

- 4 large events (as of 9/21/22):

Date	Characterization	Customers Impacted (rounded)	Regions Activated	Duration (bulk of customers)
Jan 1	High wind	12,000	Western, Southern	3 days
Jan 7	Wind, snow, rain	5,000	King	2 days
Apr 4	Wind, rain	50,000	King, Southern, Northern, Western	3 days
May 5	Wind, rain	12,000	Western, Northern	2 days

What's ahead for 2022? Fall 2021 saw 5 storms between OCT-DEC

How long until I get my power back???



It depends on many factors



Response Capabilities

In addition to our field crews and servicemen, who work on day-to-day electric response, PSE has:

- Over 950 PSE employees with emergency assignments. Some of these are field positions, while others work behind the scenes to support field operations in our ECC and Operating Bases.
- Mutual assistance agreements with energy providers throughout the US, which includes resources for both electric and natural gas response.
- Strong relationships at the State, County, and Jurisdictional levels.



The day before the storm



Today's the day



Damage assessors: Trained individuals who determine what material is needed for the crews



Transmission first, then distribution circuits
Priority to hospitals and public services

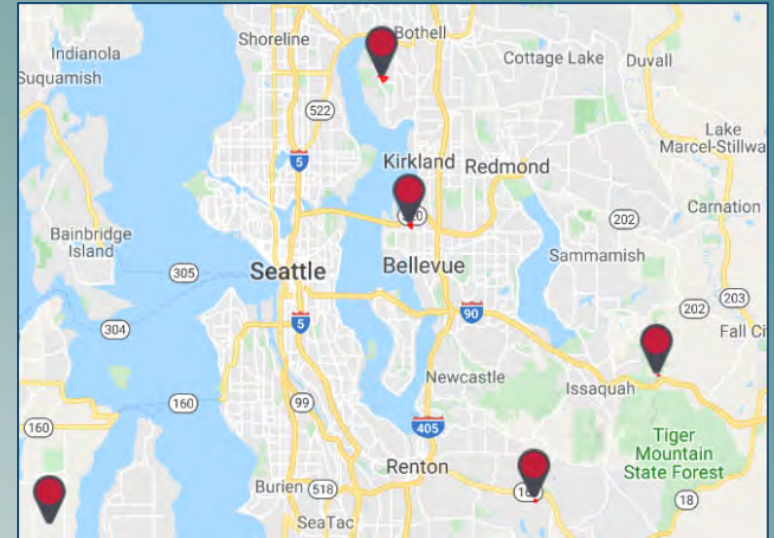


Keep working in same
geographical area



Situational Awareness

- Outage Map @ www.pse.com
- PSE App
- Situation Reports every 6 hours
- PSE.com window shade
- Social media





RESIDENTIAL

BUSINESS

\$ PAY BILL

👤 SIGN IN

⚡ OUTAGES

Search



Account & Billing

Safety & Outages

Customer Service

Efficiency & Green Options

Construction Services

Who We Are

Power outages

Outage map

Report an outage

Storm resources

Alerts and advisories

Street light problem

How power gets restored

Service guarantees

Electric safety

Downed power lines

Generator safety

Electrical safety tips

Electricity shut off

Electromagnetic fields

Natural gas safety

Natural gas leaks

Call before you dig

Blocked sewer and septic

Gas inspections

Carbon monoxide

Gas shut off

Gas safety tips

Get prepared

Have a plan

Create a kit

Storm

Flood

Earthquake

Emergency operations

For emergency responders

Responder training

Near miss bulletins

- For general outage information, see: pse.com/advisories
- For outage preparedness tips, see: pse.com/storm

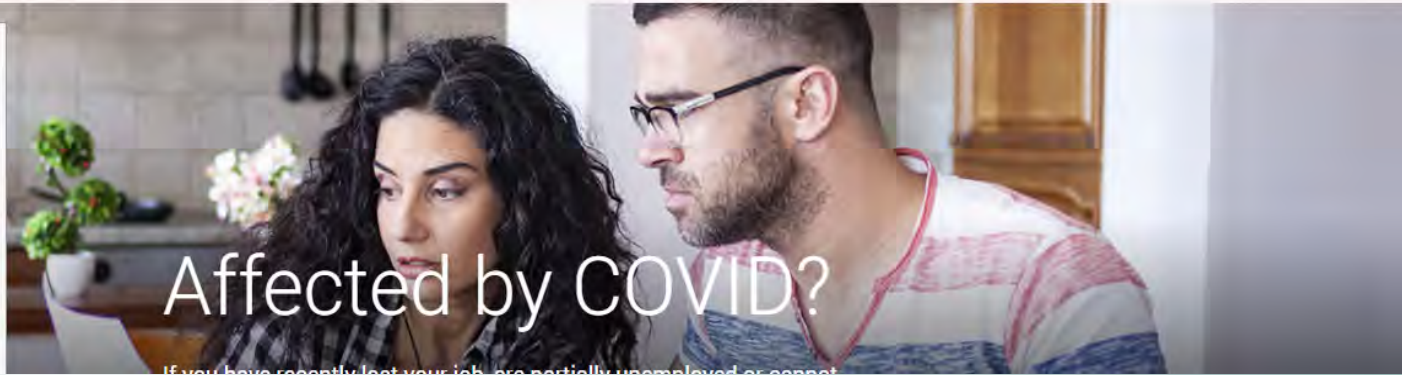
SIGN IN

Username

Password

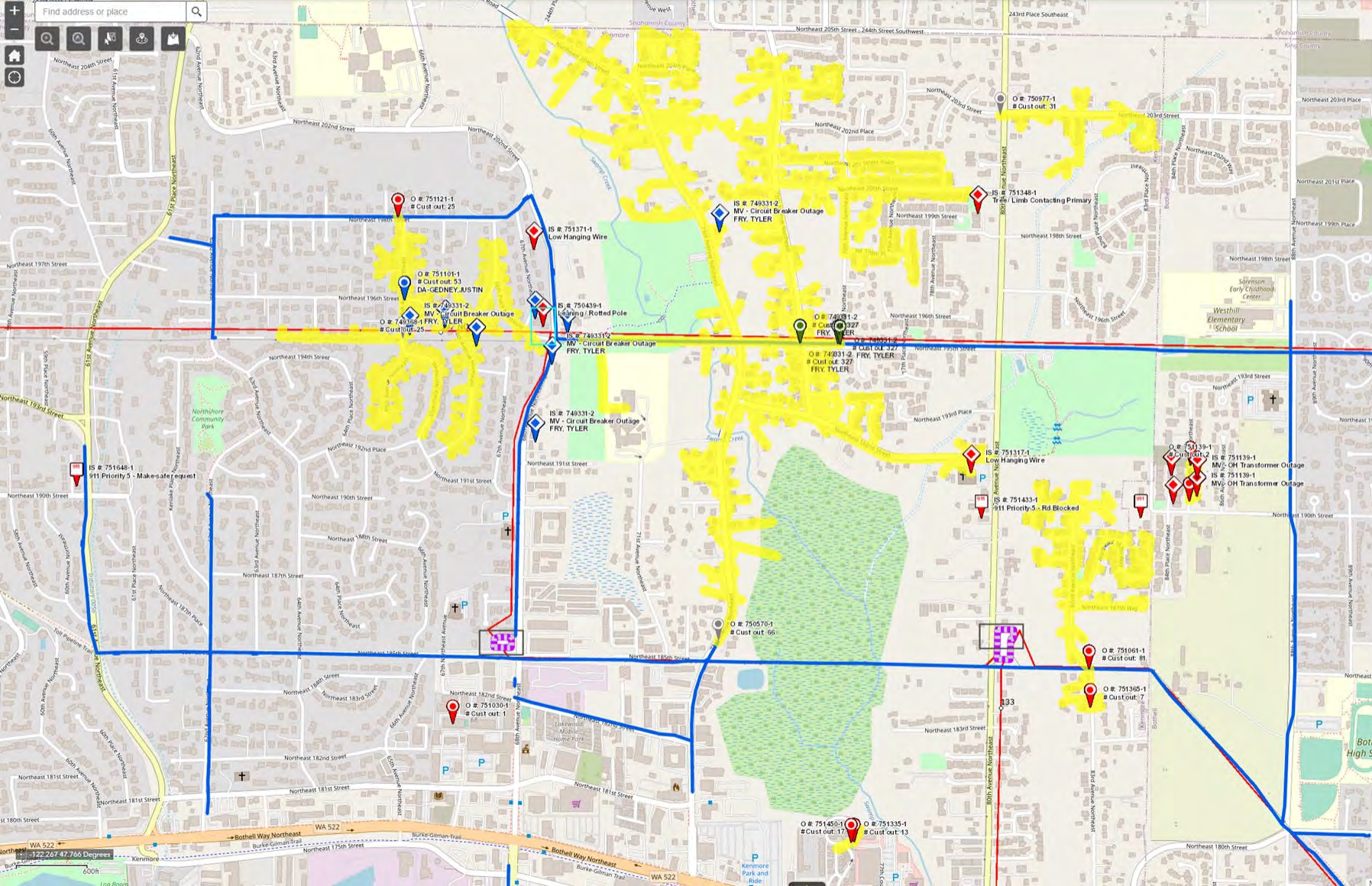
Remember me

Forgot [username](#) or [password](#)?



If you have recently lost your job, are partially unemployed, or cannot





Selected Object Attributes (1 of 3) [Clear](#)

Trouble - Unassigned	
OBJECTID	39376
ISJECTID	834,227.00
ISREF_LABEL	750439-1
ISIDENT_ID	870,043.00
ISIDENT_TYPE	IS Trouble
ISART_TIME	October 24, 2021
ISJM_CUSTOMERS	0.00
ISORMAL_CIRCUIT	KNM-26
ISIRRENT_CIRCUIT	KNM-26
ISRWER_STATUS	in_service
ISIDENT	Leaning / Rotted Pole
ISLOCATION_DESC	6710 NE 195TH ST, KENMORE
ISGION	North King
ISRVCE_AREA	North King SC
ISSIGNED_CREW	
ISSIGNED_TIME	
ISUSE	
ISSESSED	NO
ISIDER_COMMENTS	
ISCUSTOMER_COMMENTS	CORINA PFEL: 4253180103. Pole near intersection has snapped in half. AT THE INTERSECTION OF 195TH ST AND 65TH AVE NE THERE ARE A FEW ROTTED POLES ONE IN PARTICULAR IS LOOKING LIKE IT WILL FALL ONTO THE ROAD
ISVICE_DESCRIPTION	
ISVICE_TABLE	
ISVICE_ID	
ISOUTAGE_LINE_PRI	
ISOUTAGE_LINE_ALL	
ISOUTAGE_LOCATION	
ISCALL_LOCATION	["type": "MultiPoint", "coordinates": [{"x": -122.248730493, "y": 47.7700942808}, {"x": -122.248730493, "y": 47.7700942808}]]
ISACCESSED_TIME	October 24, 2021
ISST_UPDATED_ON	October 24, 2021
ISCUSTOMER_NAME	ANDRES VERDAN
ISCUSTOMER_NUM	916983906
ISCUSTOMER_ADDRESS	6710 NE 195TH ST, KENMORE
ISLOCATION	North King
ISGION	SysOps - North King
ISsignedInEsri	

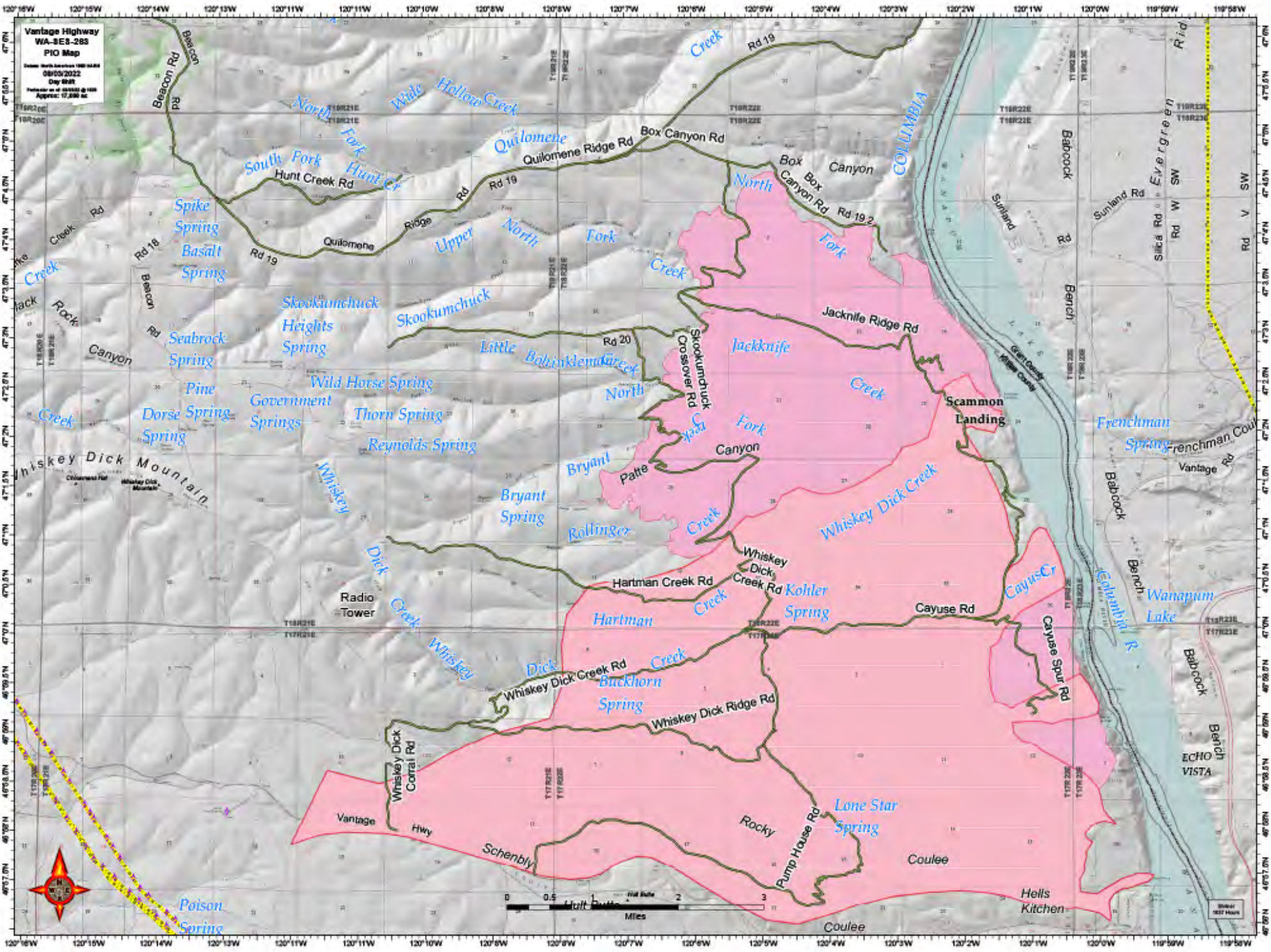
[Zoom to](#) [Clear Selected](#) ...



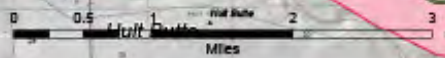


Looks like everything happens in the winter and spring, what about the other seasons?

We only have two seasons: Storm and Wildfire



Vantage Highway
WA-SE8-283
PIO Map
Scale: North Arrow 1:50,000
08/10/2022
Day Shift
Produced on 08/10/2022 @ 1:50
Approx: 17,800 sq.



Scale
1:50,000







Questions?



PUGET
SOUND
ENERGY

